

### 34. Dendrodacrys (photo 5/6)

Observation: <https://www.inaturalist.org/observations/297279979>

Observation taxon: Dendrodacrys

Community taxon: Dendrodacrys

Barcode Inferred Species or Name: Dendrodacrys sp. 'AL01'

Observed at: 2025-07-12T13:45:17



### 34. Dendrodacrys (photo 6/6)

Observation: <https://www.inaturalist.org/observations/297279979>

Observation taxon: Dendrodacrys

Community taxon: Dendrodacrys

Barcode Inferred Species or Name: Dendrodacrys sp. 'AL01'

Observed at: 2025-07-12T13:45:17



Observation 297279979: (c) Alisha Millican, some rights reserved (CC BY-NC). License: cc-by-nc. Source: <https://www.inaturalist.org/observations/297279979>



### 35. *Elmerina caryae* (photo 1/5)

Observation: <https://www.inaturalist.org/observations/297277603>

Observation taxon: Fungi

Community taxon: Fungi

Barcode Inferred Species or Name: No set

Observed at: 2025-07-12T13:32:05



Observation 297277603: (c) Alisha Millican, some rights reserved (CC BY-NC). License: cc-by-nc. Source: <https://www.inaturalist.org/observations/297277603>

### 35. *Elmerina caryae* (photo 2/5)

Observation: <https://www.inaturalist.org/observations/297277603>

Observation taxon: Fungi

Community taxon: Fungi

Barcode Inferred Species or Name: No set

Observed at: 2025-07-12T13:32:05



Observation 297277603: (c) Alisha Millican, some rights reserved (CC BY-NC). License: cc-by-nc. Source: <https://www.inaturalist.org/observations/297277603>



### 35. *Elmerina caryae* (photo 3/5)

Observation: <https://www.inaturalist.org/observations/297277603>

Observation taxon: Fungi

Community taxon: Fungi

Barcode Inferred Species or Name: No set

Observed at: 2025-07-12T13:32:05



Observation 297277603: (c) Alisha Millican, some rights reserved (CC BY-NC). License: cc-by-nc. Source: <https://www.inaturalist.org/observations/297277603>

### 35. *Elmerina caryae* (photo 4/5)

Observation: <https://www.inaturalist.org/observations/297277603>

Observation taxon: Fungi

Community taxon: Fungi

Barcode Inferred Species or Name: No set

Observed at: 2025-07-12T13:32:05



Observation 297277603: (c) Alisha Millican, some rights reserved (CC BY-NC). License: cc-by-nc. Source: <https://www.inaturalist.org/observations/297277603>



### 35. *Elmerina caryae* (photo 5/5)

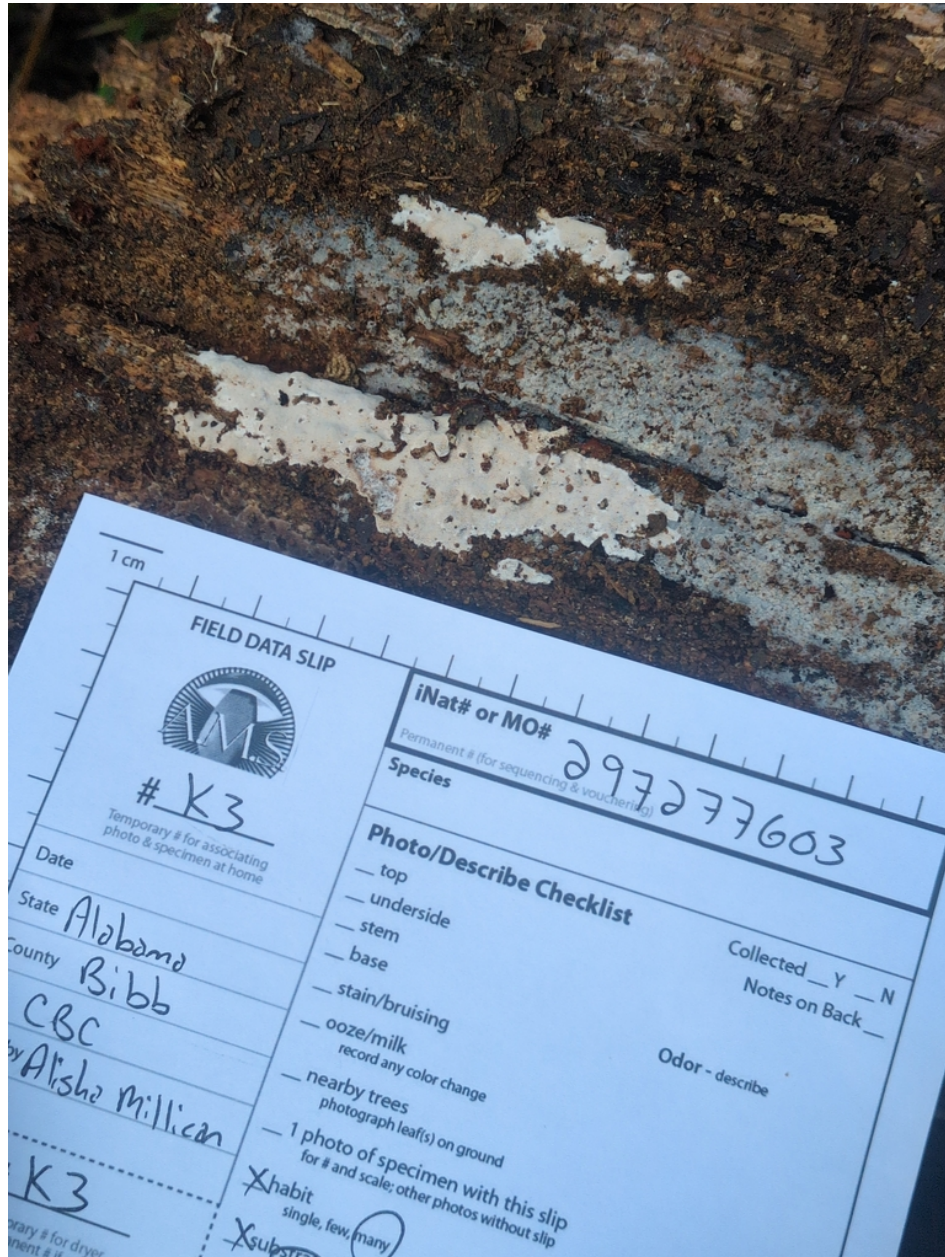
Observation: <https://www.inaturalist.org/observations/297277603>

Observation taxon: Fungi

Community taxon: Fungi


Barcode Inferred Species or Name: No set

Observed at: 2025-07-12T13:32:05



1 cm

FIELD DATA SLIP



# K3  
Temporary # for associating photo & specimen at home

Date \_\_\_\_\_

State Alabama

County Bibb

CBC

by Alisha Millican

K3  
Temporary # for dryer  
Permanent # if \_\_\_\_\_

iNat# or MO# 297277603  
Permanent # (for sequencing & vouchering)

Species \_\_\_\_\_

Photo/Describe Checklist

☐ top

☐ underside

☐ stem

☐ base

☐ stain/bruising

☐ ooze/milk  
record any color change

☐ nearby trees  
photograph leaf(s) on ground

☐ 1 photo of specimen with this slip  
for # and scale; other photos without slip

☒ habit  
single, few, many

☒ substrate

Collected ☐ Y ☐ N

Notes on Back \_\_\_\_\_

Odor - describe \_\_\_\_\_

Observation 297277603: (c) Alisha Millican, some rights reserved (CC BY-NC). License: cc-by-nc. Source: <https://www.inaturalist.org/observations/297277603>



### 36. *Flabellophora obovata* (photo 1/4)

Observation: <https://www.inaturalist.org/observations/297466751>

Observation taxon: *Flabellophora obovata*

Community taxon: *Flabellophora obovata*

Barcode Inferred Species or Name: *Mycorrhaphium* sp. 'adustum-IN01'

Observed at: 2025-07-12T21:06:52





### 36. *Flabellophora obovata* (photo 2/4)

Observation: <https://www.inaturalist.org/observations/297466751>

Observation taxon: *Flabellophora obovata*

Community taxon: *Flabellophora obovata*

Barcode Inferred Species or Name: *Mycorrhaphium* sp. 'adustum-IN01'

Observed at: 2025-07-12T21:06:52



### 36. Flabellophora obovata (photo 3/4)

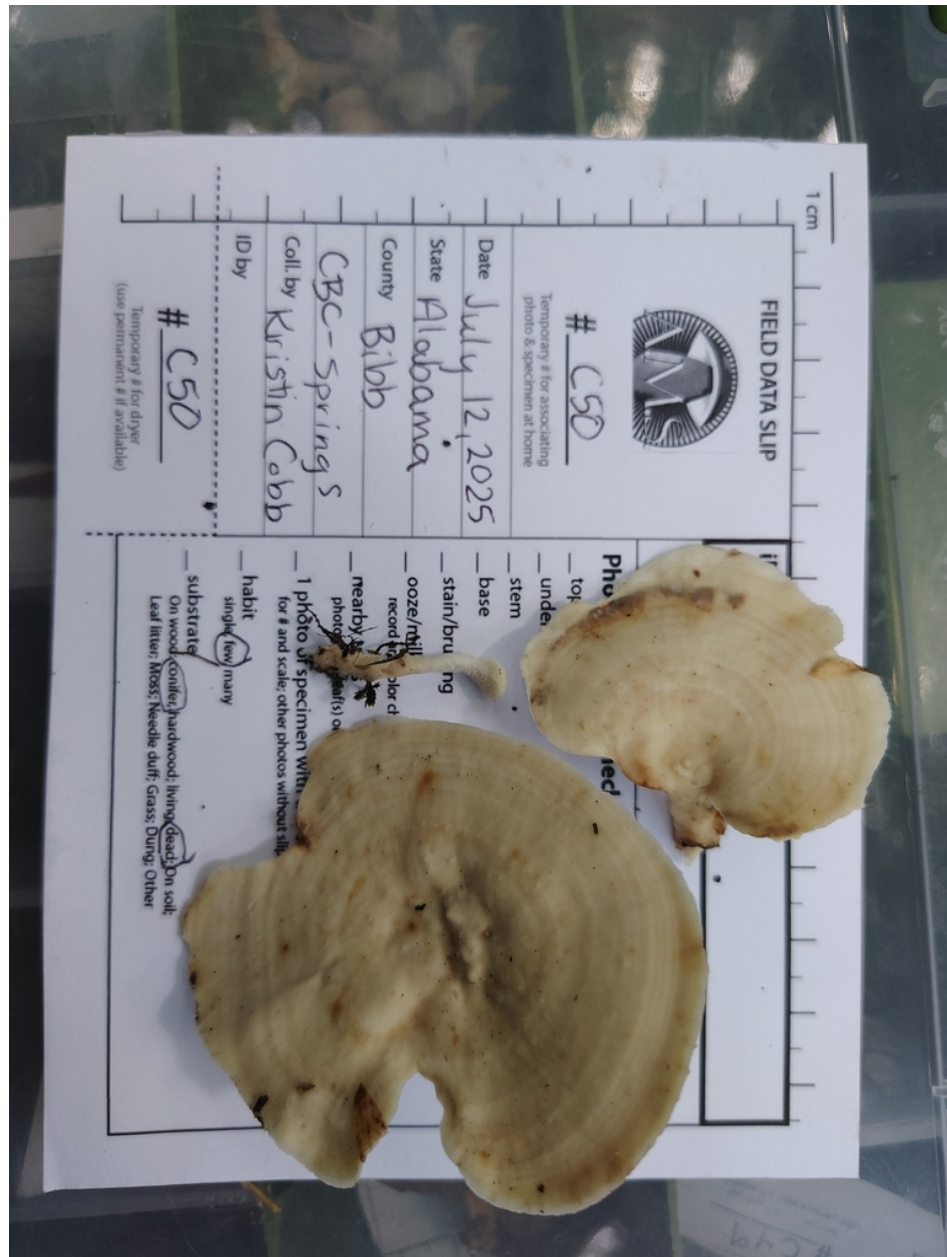
Observation: <https://www.inaturalist.org/observations/297466751>

Observation taxon: Flabellophora obovata

Community taxon: Flabellophora obovata

Barcode Inferred Species or Name: Mycorrhaphium sp. 'adustum-IN01'

Observed at: 2025-07-12T21:06:52





### 36. *Flabellophora obovata* (photo 4/4)

Observation: <https://www.inaturalist.org/observations/297466751>

Observation taxon: *Flabellophora obovata*

Community taxon: *Flabellophora obovata*

Barcode Inferred Species or Name: *Mycorrhaphium* sp. 'adustum-IN01'

Observed at: 2025-07-12T21:06:52



Observation 297466751: (c) kristin, some rights reserved (CC BY-NC). License: cc-by-nc. Source: <https://www.inaturalist.org/observations/297466751>



### 37. Geastrum (photo 1/4)

Observation: <https://www.inaturalist.org/observations/297377396>

Observation taxon: Geastrum

Community taxon: Geastrum

Barcode Inferred Species or Name: Geastrum sp. 'MO01'

Observed at: 2025-07-12T19:34:39





### 37. Geastrum (photo 2/4)

Observation: <https://www.inaturalist.org/observations/297377396>

Observation taxon: Geastrum

Community taxon: Geastrum

Barcode Inferred Species or Name: Geastrum sp. 'MO01'

Observed at: 2025-07-12T19:34:39





### 37. Geastrum (photo 3/4)

Observation: <https://www.inaturalist.org/observations/297377396>

Observation taxon: Geastrum

Community taxon: Geastrum

Barcode Inferred Species or Name: Geastrum sp. 'MO01'

Observed at: 2025-07-12T19:34:39





### 37. Geastrum (photo 4/4)

Observation: <https://www.inaturalist.org/observations/297377396>

Observation taxon: Geastrum

Community taxon: Geastrum

Barcode Inferred Species or Name: Geastrum sp. 'MO01'

Observed at: 2025-07-12T19:34:39





### 38. Geastrum (photo 1/3)

Observation: <https://www.inaturalist.org/observations/297646363>

Observation taxon: Geastrum

Community taxon: Geastrum

Barcode Inferred Species or Name: Geastrum sp. 'IN05'

Observed at: 2025-07-13T16:47:52





### 38. Geastrum (photo 2/3)

Observation: <https://www.inaturalist.org/observations/297646363>

Observation taxon: Geastrum

Community taxon: Geastrum

Barcode Inferred Species or Name: Geastrum sp. 'IN05'

Observed at: 2025-07-13T16:47:52



Observation 297646363: (c) Alisha Millican, some rights reserved (CC BY-NC). License: cc-by-nc. Source: <https://www.inaturalist.org/observations/297646363>

### 38. Geastrum (photo 3/3)

Observation: <https://www.inaturalist.org/observations/297646363>

Observation taxon: Geastrum

Community taxon: Geastrum

Barcode Inferred Species or Name: Geastrum sp. 'IN05'

Observed at: 2025-07-13T16:47:52



Observation 297646363: (c) Alisha Millican, some rights reserved (CC BY-NC). License: cc-by-nc. Source: <https://www.inaturalist.org/observations/297646363>



### 39. *Geoglossum difforme* (photo 1/5)

Observation: <https://www.inaturalist.org/observations/297646270>

Observation taxon: *Geoglossum difforme*

Community taxon: *Geoglossum difforme*

Barcode Inferred Species or Name: *Geoglossum* sp. 'difforme-IN01'

Observed at: 2025-07-13T16:50:14



Observation 297646270: (c) Alisha Millican, some rights reserved (CC BY-NC). License: cc-by-nc. Source: <https://www.inaturalist.org/observations/297646270>



### 39. *Geoglossum difforme* (photo 2/5)

Observation: <https://www.inaturalist.org/observations/297646270>

Observation taxon: *Geoglossum difforme*

Community taxon: *Geoglossum difforme*

Barcode Inferred Species or Name: *Geoglossum* sp. 'difforme-IN01'

Observed at: 2025-07-13T16:50:14



Observation 297646270: (c) Alisha Millican, some rights reserved (CC BY-NC). License: cc-by-nc. Source: <https://www.inaturalist.org/observations/297646270>



### 39. *Geoglossum difforme* (photo 3/5)

Observation: <https://www.inaturalist.org/observations/297646270>

Observation taxon: *Geoglossum difforme*

Community taxon: *Geoglossum difforme*

Barcode Inferred Species or Name: *Geoglossum* sp. 'difforme-IN01'

Observed at: 2025-07-13T16:50:14



Observation 297646270: (c) Alisha Millican, some rights reserved (CC BY-NC). License: cc-by-nc. Source: <https://www.inaturalist.org/observations/297646270>



### 39. *Geoglossum difforme* (photo 4/5)

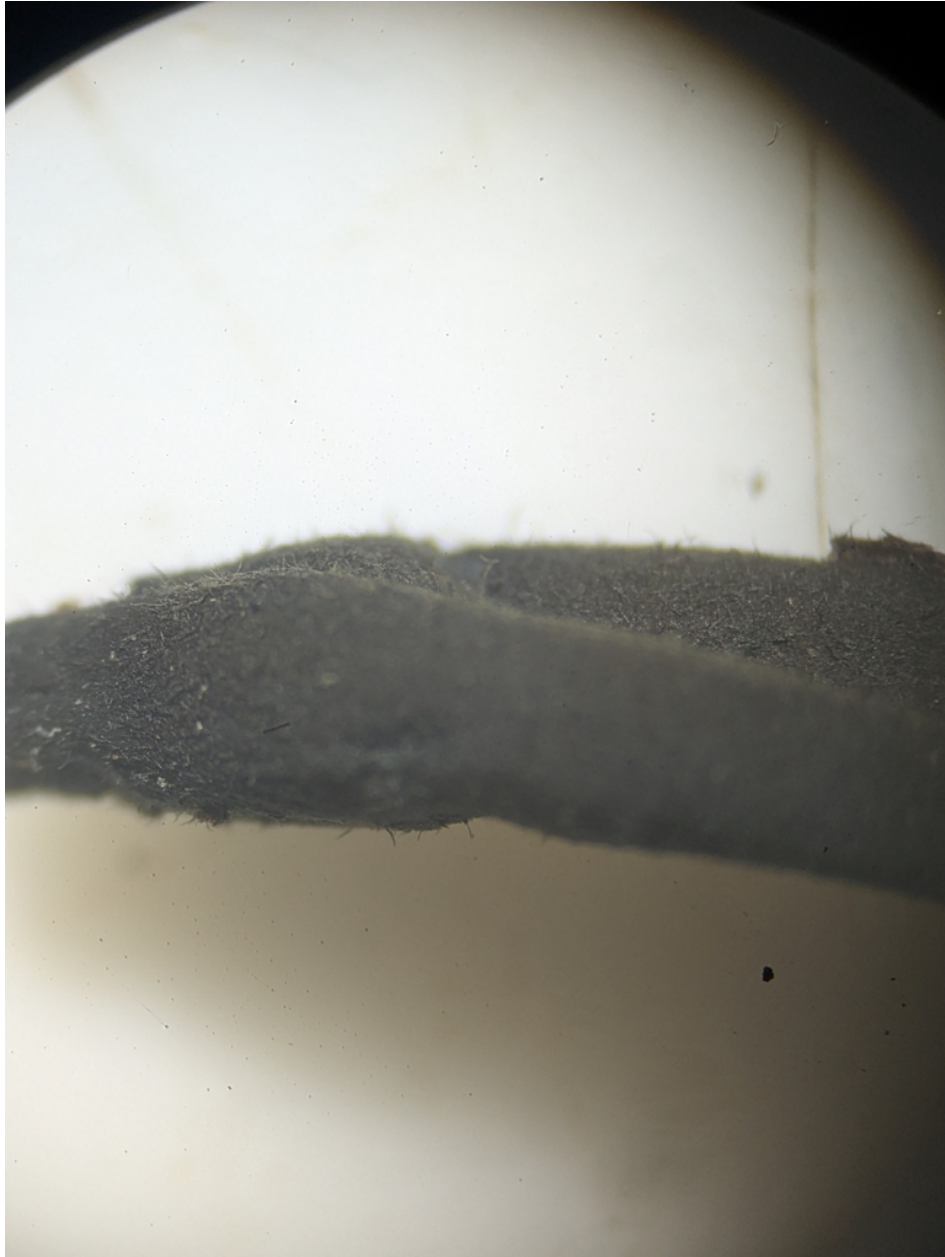
Observation: <https://www.inaturalist.org/observations/297646270>

Observation taxon: *Geoglossum difforme*

Community taxon: *Geoglossum difforme*

Barcode Inferred Species or Name: *Geoglossum* sp. 'difforme-IN01'

Observed at: 2025-07-13T16:50:14



Observation 297646270: (c) Alisha Millican, some rights reserved (CC BY-NC). License: cc-by-nc. Source: <https://www.inaturalist.org/observations/297646270>



### 39. *Geoglossum difforme* (photo 5/5)

Observation: <https://www.inaturalist.org/observations/297646270>

Observation taxon: *Geoglossum difforme*

Community taxon: *Geoglossum difforme*

Barcode Inferred Species or Name: *Geoglossum* sp. 'difforme-IN01'

Observed at: 2025-07-13T16:50:14



Observation 297646270: (c) Alisha Millican, some rights reserved (CC BY-NC). License: cc-by-nc. Source: <https://www.inaturalist.org/observations/297646270>

#### 40. *Gymnopus* (photo 1/4)

Observation: <https://www.inaturalist.org/observations/297419464>

Observation taxon: *Gymnopus*

Community taxon: *Gymnopus*

Barcode Inferred Species or Name: *Gymnopus spongiosus*

Observed at: 2025-07-12T19:57:17





#### 40. *Gymnopus* (photo 2/4)

Observation: <https://www.inaturalist.org/observations/297419464>

Observation taxon: *Gymnopus*

Community taxon: *Gymnopus*

Barcode Inferred Species or Name: *Gymnopus spongiosus*

Observed at: 2025-07-12T19:57:17



Observation 297419464: (c) kristin, some rights reserved (CC BY-NC). License: cc-by-nc. Source: <https://www.inaturalist.org/observations/297419464>

#### 40. Gymnopus (photo 3/4)

Observation: <https://www.inaturalist.org/observations/297419464>

Observation taxon: Gymnopus

Community taxon: Gymnopus

Barcode Inferred Species or Name: Gymnopus spongiosus

Observed at: 2025-07-12T19:57:17

1 cm

FIELD DATA SLIP

# C43

Temporary # for associating photo & specimen at home

Date July 12, 2025

State Alabama

County Bibb

Coll. by Kristin Cobb

ID by \_\_\_\_\_

# C43

Temporary # for dryer (use permanent # if available)

iNat# or MO# \_\_\_\_\_

Permanent # (for sequencing & vouchering)

Species \_\_\_\_\_

Photo/Describe Checklist

— top

— underside

— stem

— base

— stain/bruising

— ooze/milk

— record any color change

— nearby trees

— photograph leaf(s) on ground

— 1 photo of specimen with this slip for # and scale; other photos without slip

— habit

— single, few, many

— substrate

On wood: conifer, hardwood; living, dead; On a Leaf litter: Moss; Needle duff; Grass; Dung; Other



#### 40. *Gymnopus* (photo 4/4)

Observation: <https://www.inaturalist.org/observations/297419464>

Observation taxon: *Gymnopus*

Community taxon: *Gymnopus*

Barcode Inferred Species or Name: *Gymnopus spongiosus*

Observed at: 2025-07-12T19:57:17



Observation 297419464: (c) kristin, some rights reserved (CC BY-NC). License: cc-by-nc. Source: <https://www.inaturalist.org/observations/297419464>

## 42. *Helvellosebacina conrescens* (photo 1/3)

Observation: <https://www.inaturalist.org/observations/297361325>

Observation taxon: *Helvellosebacina conrescens*

Community taxon: *Helvellosebacina conrescens*

Barcode Inferred Species or Name: *Helvellosebacina* sp. 'conrescens-IN02'

Observed at: 2025-07-12T14:51:00





## 42. *Helvellosebacina conrescens* (photo 2/3)

Observation: <https://www.inaturalist.org/observations/297361325>

Observation taxon: *Helvellosebacina conrescens*

Community taxon: *Helvellosebacina conrescens*

Barcode Inferred Species or Name: *Helvellosebacina* sp. 'conrescens-IN02'

Observed at: 2025-07-12T14:51:00

1 cm

AMS

# C9

Temporary # for associating photo & specimen at home

Date July 12, 2025

State Alabama

County Bibb

CBC

Coll. by Kristin Cobb

ID by

# C9

Temporary # for dryer (use permanent # if available)

Species

Photo/Describe Checklist

Collected Y N

Notes on Back

Odor - describe

— top

— underside

— stem

— base

— stain/bruising

— ooze/milk  
record any color change

— nearby trees  
photograph leaf(s) on ground

— 1 photo of specimen with this slip  
for # and scale; other photos without slip

— habit  
single, few, many

— substrate  
On wood: conifer, hardwood; living, dead; On soil;  
Leaf litter; Moss; Needle duff; Grass; Dung; Other

## 42. *Helvellosebacina conrescens* (photo 3/3)

Observation: <https://www.inaturalist.org/observations/297361325>

Observation taxon: *Helvellosebacina conrescens*

Community taxon: *Helvellosebacina conrescens*

Barcode Inferred Species or Name: *Helvellosebacina* sp. 'conrescens-IN02'

Observed at: 2025-07-12T14:51:00





### 43. Hydnellum (photo 1/2)

Observation: <https://www.inaturalist.org/observations/297649019>

Observation taxon: Hydnellum

Community taxon: Hydnellum

Barcode Inferred Species or Name: *Hydnellum spongiosipes*

Observed at: 2025-07-13T16:42:31





### 43. Hydnellum (photo 2/2)

Observation: <https://www.inaturalist.org/observations/297649019>

Observation taxon: Hydnellum

Community taxon: Hydnellum

Barcode Inferred Species or Name: *Hydnellum spongiosipes*

Observed at: 2025-07-13T16:42:31





#### 44. *Hypomyces subiculosus* (photo 1/8)

Observation: <https://www.inaturalist.org/observations/297472734>

Observation taxon: Ascomycota


Community taxon: Ascomycota

Barcode Inferred Species or Name: No set

Observed at: 2025-07-12T14:46:23

1 cm

**FIELD DATA SLIP**



# K14  
Temporary # for associating photo & specimen at home

Date \_\_\_\_\_

State Alabama

County Bibb

CBC

Coll. by Alisha Millican

ID by \_\_\_\_\_

# \_\_\_\_\_  
Temporary # for dryer (use permanent # if available)

**iNat# or MO#**  
Permanent # (for sequencing & vouchering)

**Species**

**Photo/Describe Checklist**

Collected Y N  
Notes on Back \_\_\_\_\_

☐ top  
☐ underside  
☐ stem  
☐ base  
☐ stain/bruising  
☐ ooze/milk  
record any color change  
☐ nearby trees  
photograph leaf(s) on ground  
☐ 1 photo of specimen with this slip for # and scale; other photos without slip

Odor - describe \_\_\_\_\_

☒ habit  
single, few, many many

☒ substrate  
On wood: conifer, hardwood; living, dead; On soil:  
Leaf litter; Moss; Needle duff; Grass; Dung; Other  
on rotting Trichipterum bifidum

#### 44. *Hypomyces subiculosus* (photo 2/8)

Observation: <https://www.inaturalist.org/observations/297472734>

Observation taxon: Ascomycota

Community taxon: Ascomycota

Barcode Inferred Species or Name: No set

Observed at: 2025-07-12T14:46:23



Observation 297472734: (c) Alisha Millican, some rights reserved (CC BY-NC). License: cc-by-nc. Source: <https://www.inaturalist.org/observations/297472734>



#### 44. *Hypomyces subiculosus* (photo 3/8)

Observation: <https://www.inaturalist.org/observations/297472734>

Observation taxon: Ascomycota

Community taxon: Ascomycota

Barcode Inferred Species or Name: No set

Observed at: 2025-07-12T14:46:23



Observation 297472734: (c) Alisha Millican, some rights reserved (CC BY-NC). License: cc-by-nc. Source: <https://www.inaturalist.org/observations/297472734>

#### 44. *Hypomyces subiculosus* (photo 4/8)

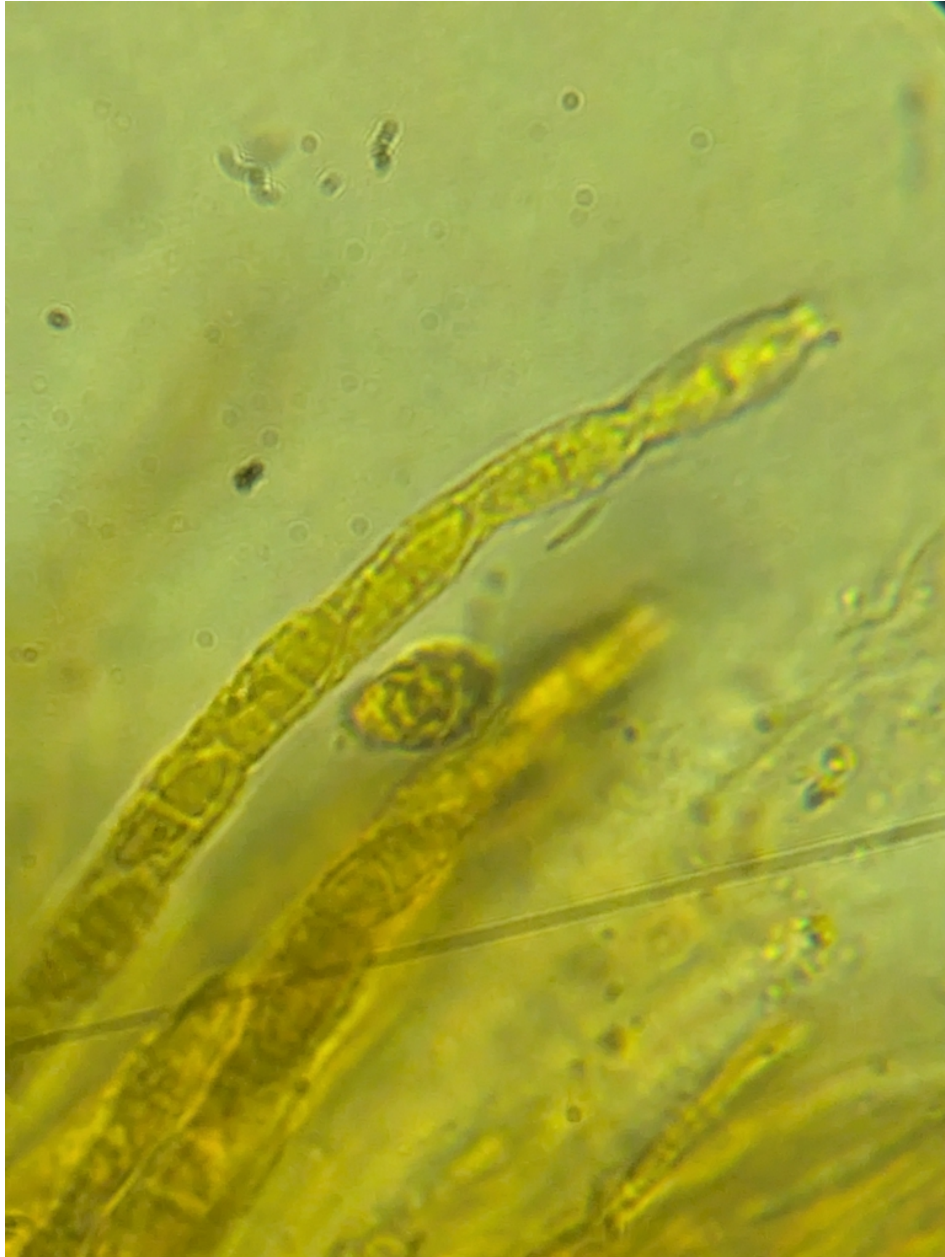
Observation: <https://www.inaturalist.org/observations/297472734>

Observation taxon: Ascomycota

Community taxon: Ascomycota

Barcode Inferred Species or Name: No set

Observed at: 2025-07-12T14:46:23



Observation 297472734: (c) Alisha Millican, some rights reserved (CC BY-NC). License: cc-by-nc. Source: <https://www.inaturalist.org/observations/297472734>



#### 44. *Hypomyces subiculosus* (photo 5/8)

Observation: <https://www.inaturalist.org/observations/297472734>

Observation taxon: Ascomycota

Community taxon: Ascomycota

Barcode Inferred Species or Name: No set

Observed at: 2025-07-12T14:46:23



Observation 297472734: (c) Alisha Millican, some rights reserved (CC BY-NC). License: cc-by-nc. Source: <https://www.inaturalist.org/observations/297472734>

#### 44. *Hypomyces subiculosus* (photo 6/8)

Observation: <https://www.inaturalist.org/observations/297472734>

Observation taxon: Ascomycota

Community taxon: Ascomycota

Barcode Inferred Species or Name: No set

Observed at: 2025-07-12T14:46:23



Observation 297472734: (c) Alisha Millican, some rights reserved (CC BY-NC). License: cc-by-nc. Source: <https://www.inaturalist.org/observations/297472734>



#### 44. *Hypomyces subiculosus* (photo 7/8)

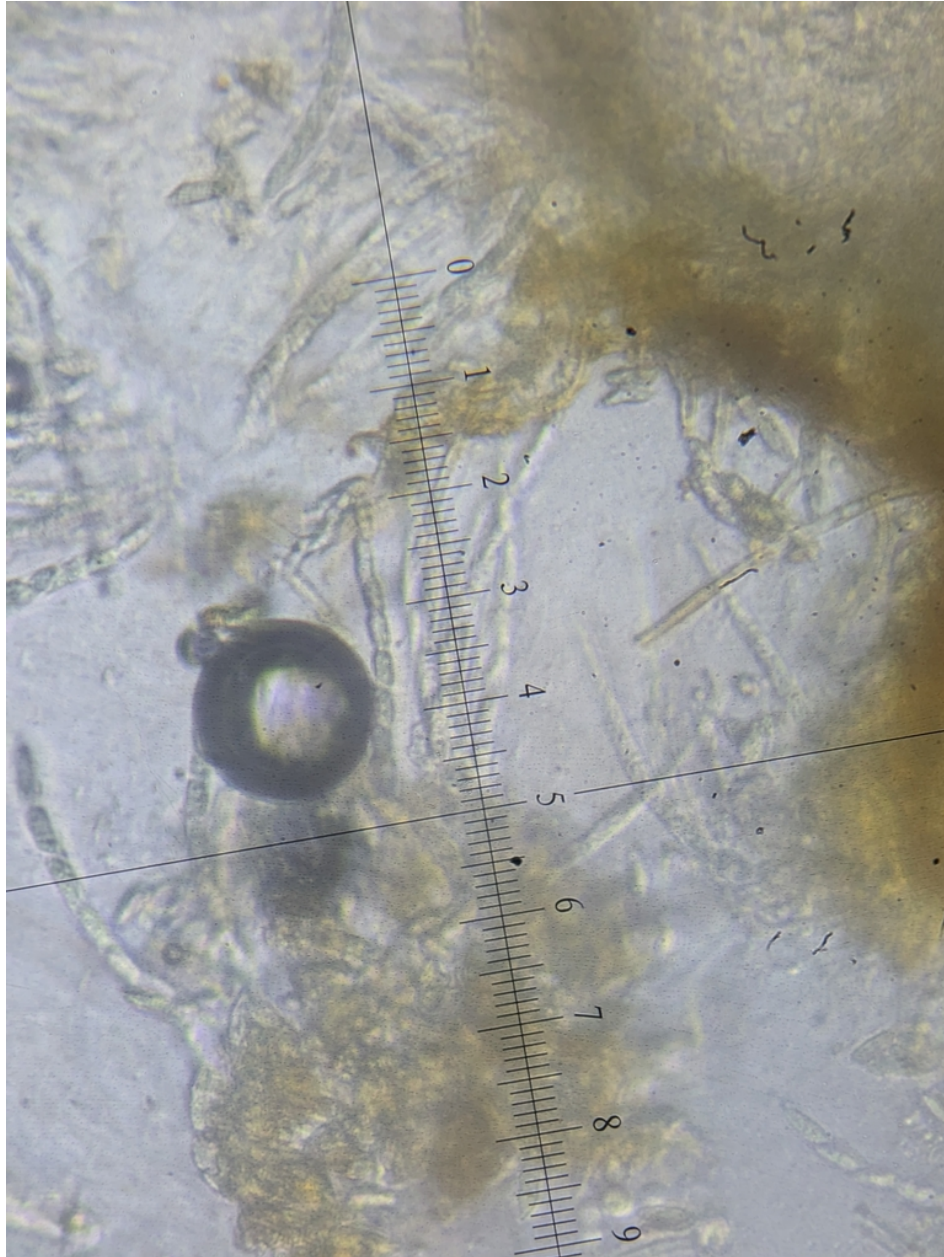
Observation: <https://www.inaturalist.org/observations/297472734>

Observation taxon: Ascomycota

Community taxon: Ascomycota

Barcode Inferred Species or Name: No set

Observed at: 2025-07-12T14:46:23



Observation 297472734: (c) Alisha Millican, some rights reserved (CC BY-NC). License: cc-by-nc. Source: <https://www.inaturalist.org/observations/297472734>

#### 44. *Hypomyces subiculosus* (photo 8/8)

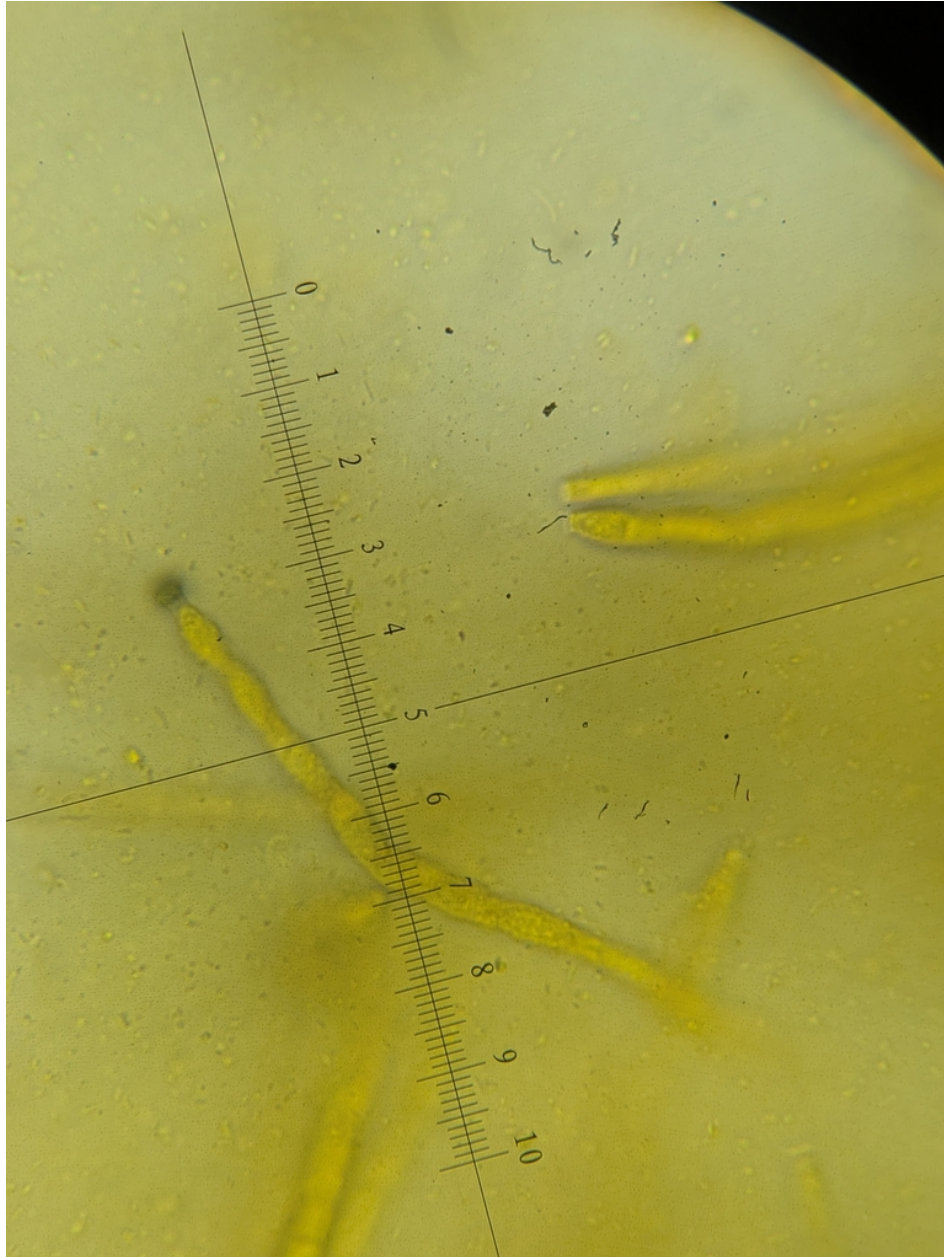
Observation: <https://www.inaturalist.org/observations/297472734>

Observation taxon: Ascomycota

Community taxon: Ascomycota

Barcode Inferred Species or Name: No set

Observed at: 2025-07-12T14:46:23



Observation 297472734: (c) Alisha Millican, some rights reserved (CC BY-NC). License: cc-by-nc. Source: <https://www.inaturalist.org/observations/297472734>



#### 45. Ingratae (photo 1/3)

Observation: <https://www.inaturalist.org/observations/297654098>

Observation taxon: Ingratae

Community taxon: Ingratae

Barcode Inferred Species or Name: *Russula* sp. 'pectinata-IN01'

Observed at: 2025-07-13T16:13:22



Observation 297654098: (c) Alisha Millican, some rights reserved (CC BY-NC). License: cc-by-nc. Source: <https://www.inaturalist.org/observations/297654098>

#### 45. Ingratae (photo 2/3)

Observation: <https://www.inaturalist.org/observations/297654098>

Observation taxon: Ingratae

Community taxon: Ingratae

Barcode Inferred Species or Name: *Russula* sp. 'pectinata-IN01'

Observed at: 2025-07-13T16:13:22



Observation 297654098: (c) Alisha Millican, some rights reserved (CC BY-NC). License: cc-by-nc. Source: <https://www.inaturalist.org/observations/297654098>



#### 45. Ingratae (photo 3/3)

Observation: <https://www.inaturalist.org/observations/297654098>

Observation taxon: Ingratae

Community taxon: Ingratae

Barcode Inferred Species or Name: *Russula* sp. 'pectinata-IN01'

Observed at: 2025-07-13T16:13:22



Observation 297654098: (c) Alisha Millican, some rights reserved (CC BY-NC). License: cc-by-nc. Source: <https://www.inaturalist.org/observations/297654098>

## 47. Lactarius (photo 1/8)

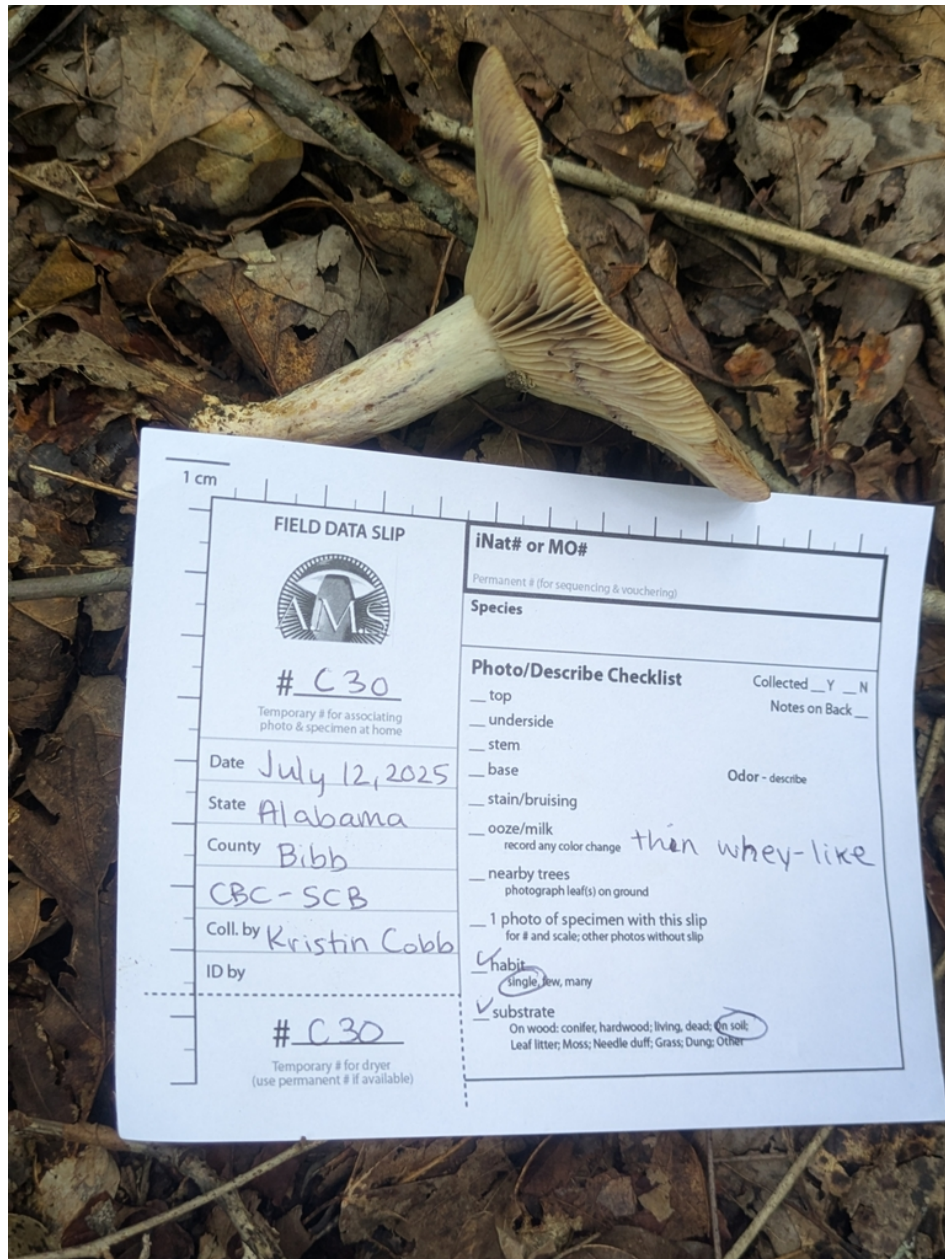
Observation: <https://www.inaturalist.org/observations/297359982>

Observation taxon: *Lactarius uvidus*

Community taxon: *Lactarius*

Barcode Inferred Species or Name: *Lactarius maculatus*

Observed at: 2025-07-12T17:30:24





## 47. Lactarius (photo 2/8)

Observation: <https://www.inaturalist.org/observations/297359982>

Observation taxon: *Lactarius uvidus*

Community taxon: *Lactarius*

Barcode Inferred Species or Name: *Lactarius maculatus*

Observed at: 2025-07-12T17:30:24



Observation 297359982: (c) Alisha Millican, some rights reserved (CC BY-NC). License: cc-by-nc. Source: <https://www.inaturalist.org/observations/297359982>

#### 47. *Lactarius* (photo 3/8)

Observation: <https://www.inaturalist.org/observations/297359982>

Observation taxon: *Lactarius uvidus*

Community taxon: *Lactarius*

Barcode Inferred Species or Name: *Lactarius maculatus*

Observed at: 2025-07-12T17:30:24



Observation 297359982: (c) Alisha Millican, some rights reserved (CC BY-NC). License: cc-by-nc. Source: <https://www.inaturalist.org/observations/297359982>



#### 47. *Lactarius* (photo 4/8)

Observation: <https://www.inaturalist.org/observations/297359982>

Observation taxon: *Lactarius uvidus*

Community taxon: *Lactarius*

Barcode Inferred Species or Name: *Lactarius maculatus*

Observed at: 2025-07-12T17:30:24



## 47. Lactarius (photo 5/8)

Observation: <https://www.inaturalist.org/observations/297359982>

Observation taxon: *Lactarius uvidus*

Community taxon: *Lactarius*

Barcode Inferred Species or Name: *Lactarius maculatus*

Observed at: 2025-07-12T17:30:24



Observation 297359982: (c) Alisha Millican, some rights reserved (CC BY-NC). License: cc-by-nc. Source: <https://www.inaturalist.org/observations/297359982>



## 47. Lactarius (photo 6/8)

Observation: <https://www.inaturalist.org/observations/297359982>

Observation taxon: *Lactarius uvidus*

Community taxon: *Lactarius*

Barcode Inferred Species or Name: *Lactarius maculatus*

Observed at: 2025-07-12T17:30:24



Observation 297359982: (c) Alisha Millican, some rights reserved (CC BY-NC). License: cc-by-nc. Source: <https://www.inaturalist.org/observations/297359982>

## 47. Lactarius (photo 7/8)

Observation: <https://www.inaturalist.org/observations/297359982>

Observation taxon: *Lactarius uvidus*

Community taxon: *Lactarius*

Barcode Inferred Species or Name: *Lactarius maculatus*

Observed at: 2025-07-12T17:30:24



Observation 297359982: (c) Alisha Millican, some rights reserved (CC BY-NC). License: cc-by-nc. Source: <https://www.inaturalist.org/observations/297359982>



## 47. Lactarius (photo 8/8)

Observation: <https://www.inaturalist.org/observations/297359982>

Observation taxon: *Lactarius uvidus*

Community taxon: *Lactarius*

Barcode Inferred Species or Name: *Lactarius maculatus*

Observed at: 2025-07-12T17:30:24



Observation 297359982: (c) Alisha Millican, some rights reserved (CC BY-NC). License: cc-by-nc. Source: <https://www.inaturalist.org/observations/297359982>

#### 48. *Lactarius* sp. 'yazooensis-IN01' (photo 1/4)

Observation: <https://www.inaturalist.org/observations/297172256>

Observation taxon: *Lactarius*

Community taxon: *Lactarius* sp. 'yazooensis-IN01'

Barcode Inferred Species or Name: *Lactarius* sp. 'yazooensis-IN01'

Observed at: 2025-07-12T00:01:19



Observation 297172256: (c) Alisha Millican, some rights reserved (CC BY-NC). License: cc-by-nc. Source: <https://www.inaturalist.org/observations/297172256>



#### 48. *Lactarius* sp. 'yazooensis-IN01' (photo 2/4)

Observation: <https://www.inaturalist.org/observations/297172256>

Observation taxon: *Lactarius*

Community taxon: *Lactarius* sp. 'yazooensis-IN01'

Barcode Inferred Species or Name: *Lactarius* sp. 'yazooensis-IN01'

Observed at: 2025-07-12T00:01:19



Observation 297172256: (c) Alisha Millican, some rights reserved (CC BY-NC). License: cc-by-nc. Source: <https://www.inaturalist.org/observations/297172256>

**48. Lactarius sp. 'yazooensis-IN01' (photo 3/4)**

Observation: <https://www.inaturalist.org/observations/297172256>

Observation taxon: Lactarius

Community taxon: Lactarius sp. 'yazooensis-IN01'

Barcode Inferred Species or Name: Lactarius sp. 'yazooensis-IN01'

Observed at: 2025-07-12T00:01:19



Observation 297172256: (c) Alisha Millican, some rights reserved (CC BY-NC). License: cc-by-nc. Source: <https://www.inaturalist.org/observations/297172256>



#### 48. *Lactarius* sp. 'yazooensis-IN01' (photo 4/4)

Observation: <https://www.inaturalist.org/observations/297172256>

Observation taxon: *Lactarius*

Community taxon: *Lactarius* sp. 'yazooensis-IN01'

Barcode Inferred Species or Name: *Lactarius* sp. 'yazooensis-IN01'

Observed at: 2025-07-12T00:01:19



Observation 297172256: (c) Alisha Millican, some rights reserved (CC BY-NC). License: cc-by-nc. Source: <https://www.inaturalist.org/observations/297172256>

**49. Lactarius sp. 'yazooensis-IN01' (photo 1/6)**

Observation: <https://www.inaturalist.org/observations/297371883>

Observation taxon: Lactarius

Community taxon: Lactarius sp. 'yazooensis-IN01'

Barcode Inferred Species or Name: Lactarius sp. 'yazooensis-IN01'

Observed at: 2025-07-12T16:48:12





#### 49. *Lactarius* sp. 'yazooensis-IN01' (photo 2/6)

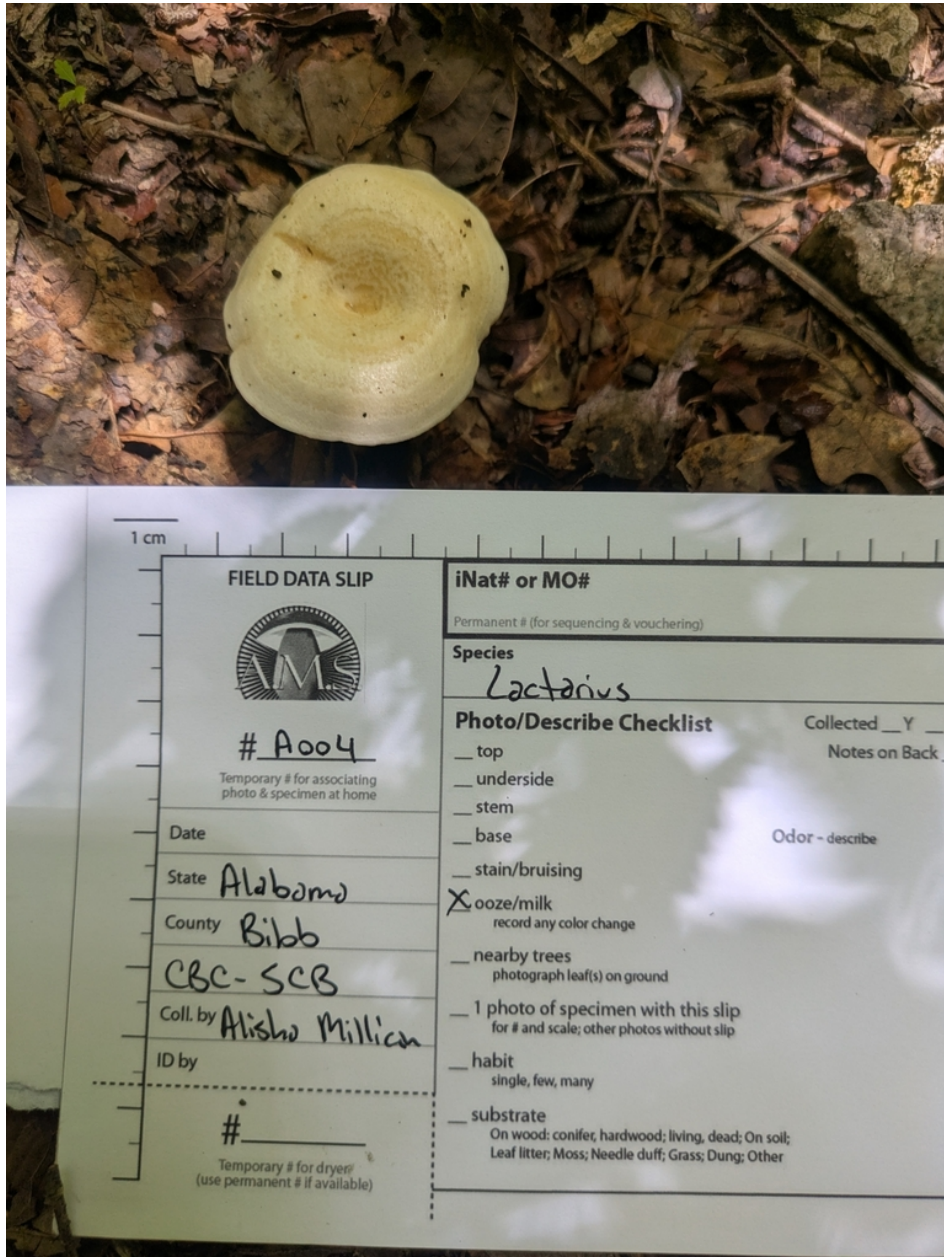
Observation: <https://www.inaturalist.org/observations/297371883>

Observation taxon: *Lactarius*

Community taxon: *Lactarius* sp. 'yazooensis-IN01'

Barcode Inferred Species or Name: *Lactarius* sp. 'yazooensis-IN01'

Observed at: 2025-07-12T16:48:12



#### 49. *Lactarius* sp. 'yazooensis-IN01' (photo 3/6)

Observation: <https://www.inaturalist.org/observations/297371883>

Observation taxon: *Lactarius*

Community taxon: *Lactarius* sp. 'yazooensis-IN01'

Barcode Inferred Species or Name: *Lactarius* sp. 'yazooensis-IN01'

Observed at: 2025-07-12T16:48:12





**49. Lactarius sp. 'yazooensis-IN01' (photo 4/6)**

Observation: <https://www.inaturalist.org/observations/297371883>

Observation taxon: Lactarius

Community taxon: Lactarius sp. 'yazooensis-IN01'

Barcode Inferred Species or Name: Lactarius sp. 'yazooensis-IN01'

Observed at: 2025-07-12T16:48:12



**49. Lactarius sp. 'yazooensis-IN01' (photo 5/6)**

Observation: <https://www.inaturalist.org/observations/297371883>

Observation taxon: Lactarius

Community taxon: Lactarius sp. 'yazooensis-IN01'

Barcode Inferred Species or Name: Lactarius sp. 'yazooensis-IN01'

Observed at: 2025-07-12T16:48:12



Observation 297371883: (c) Alisha Millican, some rights reserved (CC BY-NC). License: cc-by-nc. Source: <https://www.inaturalist.org/observations/297371883>