

16. *Leotia lubrica* (photo 3/8)

Observation: <https://www.inaturalist.org/observations/103775144>

Observation taxon: *Leotia lubrica*

Community taxon: *Leotia lubrica*

Barcode Inferred Species or Name: *Leotia* sp. 'lubrica-AL01'

Observed at: 2021-12-27T20:37:16



16. *Leotia lubrica* (photo 4/8)

Observation: <https://www.inaturalist.org/observations/103775144>

Observation taxon: *Leotia lubrica*

Community taxon: *Leotia lubrica*

Barcode Inferred Species or Name: *Leotia* sp. 'lubrica-AL01'

Observed at: 2021-12-27T20:37:16



Observation 103775144: (c) Jan Newton, some rights reserved (CC BY-NC). License: cc-by-nc. Source: <https://www.inaturalist.org/observations/103775144>

16. *Leotia lubrica* (photo 5/8)

Observation: <https://www.inaturalist.org/observations/103775144>

Observation taxon: *Leotia lubrica*

Community taxon: *Leotia lubrica*

Barcode Inferred Species or Name: *Leotia* sp. 'lubrica-AL01'

Observed at: 2021-12-27T20:37:16



16. *Leotia lubrica* (photo 6/8)

Observation: <https://www.inaturalist.org/observations/103775144>

Observation taxon: *Leotia lubrica*

Community taxon: *Leotia lubrica*

Barcode Inferred Species or Name: *Leotia* sp. 'lubrica-AL01'

Observed at: 2021-12-27T20:37:16



Observation 103775144: (c) Jan Newton, some rights reserved (CC BY-NC). License: cc-by-nc. Source: <https://www.inaturalist.org/observations/103775144>

16. *Leotia lubrica* (photo 7/8)

Observation: <https://www.inaturalist.org/observations/103775144>

Observation taxon: *Leotia lubrica*

Community taxon: *Leotia lubrica*

Barcode Inferred Species or Name: *Leotia* sp. 'lubrica-AL01'

Observed at: 2021-12-27T20:37:16



Observation 103775144: (c) Jan Newton, some rights reserved (CC BY-NC). License: cc-by-nc. Source: <https://www.inaturalist.org/observations/103775144>

16. *Leotia lubrica* (photo 8/8)

Observation: <https://www.inaturalist.org/observations/103775144>

Observation taxon: *Leotia lubrica*

Community taxon: *Leotia lubrica*

Barcode Inferred Species or Name: *Leotia* sp. 'lubrica-AL01'

Observed at: 2021-12-27T20:37:16



17. Naematelia (photo 1/7)

Observation: <https://www.inaturalist.org/observations/102970411>

Observation taxon: Naematelia

Community taxon: Naematelia

Barcode Inferred Species or Name: Naematelia sp. 'IN01'

Observed at: 2021-12-12T21:58:57



Observation 102970411: (c) Jan Newton, some rights reserved (CC BY-NC). License: cc-by-nc. Source: <https://www.inaturalist.org/observations/102970411>

17. Naematelia (photo 2/7)

Observation: <https://www.inaturalist.org/observations/102970411>

Observation taxon: Naematelia

Community taxon: Naematelia

Barcode Inferred Species or Name: Naematelia sp. 'IN01'

Observed at: 2021-12-12T21:58:57



17. Naematelia (photo 3/7)

Observation: <https://www.inaturalist.org/observations/102970411>

Observation taxon: Naematelia

Community taxon: Naematelia

Barcode Inferred Species or Name: Naematelia sp. 'IN01'

Observed at: 2021-12-12T21:58:57



Observation 102970411: (c) Jan Newton, some rights reserved (CC BY-NC). License: cc-by-nc. Source: <https://www.inaturalist.org/observations/102970411>

17. Naematelia (photo 4/7)

Observation: <https://www.inaturalist.org/observations/102970411>

Observation taxon: Naematelia

Community taxon: Naematelia

Barcode Inferred Species or Name: Naematelia sp. 'IN01'

Observed at: 2021-12-12T21:58:57



17. Naematelia (photo 5/7)

Observation: <https://www.inaturalist.org/observations/102970411>

Observation taxon: Naematelia

Community taxon: Naematelia

Barcode Inferred Species or Name: Naematelia sp. 'IN01'

Observed at: 2021-12-12T21:58:57



Observation 102970411: (c) Jan Newton, some rights reserved (CC BY-NC). License: cc-by-nc. Source: <https://www.inaturalist.org/observations/102970411>

17. Naematelia (photo 6/7)

Observation: <https://www.inaturalist.org/observations/102970411>

Observation taxon: Naematelia

Community taxon: Naematelia

Barcode Inferred Species or Name: Naematelia sp. 'IN01'

Observed at: 2021-12-12T21:58:57



Observation 102970411: (c) Jan Newton, some rights reserved (CC BY-NC). License: cc-by-nc. Source: <https://www.inaturalist.org/observations/102970411>

17. Naematelia (photo 7/7)

Observation: <https://www.inaturalist.org/observations/102970411>

Observation taxon: Naematelia

Community taxon: Naematelia

Barcode Inferred Species or Name: Naematelia sp. 'IN01'

Observed at: 2021-12-12T21:58:57

1 cm

FIELD DATA SLIP

FUNGAL DIVERSITY SURVEY

~~#00001~~
Temporary # for associating photo & specimen at home

Date Dec. 12, 2021

State Alabama

County Lee

Foray ID

Coll. by Jan Newton

ID by

~~#00001~~
Temporary # for dryer (use permanent # if available)

iNat# or MO# 102970411
Permanent # (for sequencing & vouchering)

Species [REDACTED]

Photo/Describe Checklist

Collected ☒ Y ☐ N
Notes on Back

☒ top
☒ underside
☒ stem
☒ base
☐ stain/bruising
☐ ooze/milk
 record any color change
☒ nearby trees
 photograph leaf(s) on ground
☒ 1 photo of specimen with this slip
 for # and scale; other photos without slip
☒ habit
 single, few, many
☒ substrate
 On wood: conifer, hardwood, living, dead; On soil:
 Leaf litter; Moss; Needle duff; Grass; Dung; Other

Odor - describe

18. Neofavolus (photo 1/5)

Observation: <https://www.inaturalist.org/observations/106292844>

Observation taxon: Neofavolus

Community taxon: Neofavolus

Barcode Inferred Species or Name: Neofavolus sp. 'ADD5'

Observed at: 2022-02-05T18:23:04



18. Neofavolus (photo 2/5)

Observation: <https://www.inaturalist.org/observations/106292844>

Observation taxon: Neofavolus

Community taxon: Neofavolus

Barcode Inferred Species or Name: Neofavolus sp. 'ADD5'

Observed at: 2022-02-05T18:23:04



18. Neofavolus (photo 3/5)

Observation: <https://www.inaturalist.org/observations/106292844>

Observation taxon: Neofavolus

Community taxon: Neofavolus

Barcode Inferred Species or Name: Neofavolus sp. 'ADD5'

Observed at: 2022-02-05T18:23:04



18. Neofavolus (photo 4/5)

Observation: <https://www.inaturalist.org/observations/106292844>

Observation taxon: Neofavolus

Community taxon: Neofavolus

Barcode Inferred Species or Name: Neofavolus sp. 'ADD5'

Observed at: 2022-02-05T18:23:04

1 cm

FIELD DATA SLIP

FUNGAL DIVERSITY SURVEY

~~#000001~~
Temporary # for associating photo & specimen at home

Date Feb. 5, 2022

State Alabama

County Lee

Foray ID

Coll. by Jan Newton

ID by

~~#000001~~
Temporary # for drying note when stored & if available

iNat# or MO# 106292844

Species Neofavolus alveolaris

Photo/Describe Checklist

Collected ☒ Y ☐ N

Notes on Back ☒

☒ Top

☒ Underside

☒ Stem

☒ Base

Odor - describe

☐ stain/bruising

☐ ooze/milk

☐ record any color change

☒ nearby trees Oak, beech, birch, hickory and pine.

☒ photograph leaf(s) on ground

☒ 1 photo of specimen with this slip for # and scale; other photos without slip

☒ Habit

single ☒ few ☐ many

☒ Substrate

On wood: conifer ☒ hardwood ☒ living ☒ dead; On soil: Leaf litter; Moss; Needle duff; Grass; Dung; Other

18. Neofavolus (photo 5/5)

Observation: <https://www.inaturalist.org/observations/106292844>

Observation taxon: Neofavolus

Community taxon: Neofavolus

Barcode Inferred Species or Name: Neofavolus sp. 'ADD5'

Observed at: 2022-02-05T18:23:04



19. *Oudemansiella incognita* (photo 1/8)

Observation: <https://www.inaturalist.org/observations/130429523>

Observation taxon: *Oudemansiella incognita*

Community taxon: *Oudemansiella incognita*

Barcode Inferred Species or Name: *Oudemansiella incognita*

Observed at: 2022-08-11T18:31:10



Observation 130429523: (c) Jan Newton, some rights reserved (CC BY-NC). License: cc-by-nc. Source: <https://www.inaturalist.org/observations/130429523>

19. *Oudemansiella incognita* (photo 2/8)

Observation: <https://www.inaturalist.org/observations/130429523>

Observation taxon: *Oudemansiella incognita*

Community taxon: *Oudemansiella incognita*

Barcode Inferred Species or Name: *Oudemansiella incognita*

Observed at: 2022-08-11T18:31:10



Observation 130429523: (c) Jan Newton, some rights reserved (CC BY-NC). License: cc-by-nc. Source: <https://www.inaturalist.org/observations/130429523>

19. *Oudemansiella incognita* (photo 3/8)

Observation: <https://www.inaturalist.org/observations/130429523>

Observation taxon: *Oudemansiella incognita*

Community taxon: *Oudemansiella incognita*

Barcode Inferred Species or Name: *Oudemansiella incognita*

Observed at: 2022-08-11T18:31:10



Observation 130429523: (c) Jan Newton, some rights reserved (CC BY-NC). License: cc-by-nc. Source: <https://www.inaturalist.org/observations/130429523>

19. *Oudemansiella incognita* (photo 4/8)

Observation: <https://www.inaturalist.org/observations/130429523>

Observation taxon: *Oudemansiella incognita*

Community taxon: *Oudemansiella incognita*

Barcode Inferred Species or Name: *Oudemansiella incognita*

Observed at: 2022-08-11T18:31:10



Observation 130429523: (c) Jan Newton, some rights reserved (CC BY-NC). License: cc-by-nc. Source: <https://www.inaturalist.org/observations/130429523>

19. *Oudemansiella incognita* (photo 5/8)

Observation: <https://www.inaturalist.org/observations/130429523>

Observation taxon: *Oudemansiella incognita*

Community taxon: *Oudemansiella incognita*

Barcode Inferred Species or Name: *Oudemansiella incognita*

Observed at: 2022-08-11T18:31:10



Observation 130429523: (c) Jan Newton, some rights reserved (CC BY-NC). License: cc-by-nc. Source: <https://www.inaturalist.org/observations/130429523>

19. *Oudemansiella incognita* (photo 6/8)

Observation: <https://www.inaturalist.org/observations/130429523>

Observation taxon: *Oudemansiella incognita*

Community taxon: *Oudemansiella incognita*

Barcode Inferred Species or Name: *Oudemansiella incognita*

Observed at: 2022-08-11T18:31:10



Observation 130429523: (c) Jan Newton, some rights reserved (CC BY-NC). License: cc-by-nc. Source: <https://www.inaturalist.org/observations/130429523>

19. *Oudemansiella incognita* (photo 7/8)

Observation: <https://www.inaturalist.org/observations/130429523>

Observation taxon: *Oudemansiella incognita*

Community taxon: *Oudemansiella incognita*

Barcode Inferred Species or Name: *Oudemansiella incognita*

Observed at: 2022-08-11T18:31:10



19. *Oudemansiella incognita* (photo 8/8)

Observation: <https://www.inaturalist.org/observations/130429523>

Observation taxon: *Oudemansiella incognita*

Community taxon: *Oudemansiella incognita*

Barcode Inferred Species or Name: *Oudemansiella incognita*

Observed at: 2022-08-11T18:31:10



20. *Paragymnopus foliophilus* (photo 1/8)

Observation: <https://www.inaturalist.org/observations/120879217>

Observation taxon: *Paragymnopus foliophilus*

Community taxon: *Paragymnopus foliophilus*

Barcode Inferred Species or Name: No set

Observed at: 2022-06-08T22:06:09



Observation 120879217: (c) Jan Newton, some rights reserved (CC BY-NC). License: cc-by-nc. Source: <https://www.inaturalist.org/observations/120879217>

20. *Paragymnopus foliophilus* (photo 2/8)

Observation: <https://www.inaturalist.org/observations/120879217>

Observation taxon: *Paragymnopus foliophilus*

Community taxon: *Paragymnopus foliophilus*

Barcode Inferred Species or Name: No set

Observed at: 2022-06-08T22:06:09



Observation 120879217: (c) Jan Newton, some rights reserved (CC BY-NC). License: cc-by-nc. Source: <https://www.inaturalist.org/observations/120879217>

20. *Paragymnopus foliophilus* (photo 3/8)

Observation: <https://www.inaturalist.org/observations/120879217>

Observation taxon: *Paragymnopus foliophilus*

Community taxon: *Paragymnopus foliophilus*

Barcode Inferred Species or Name: No set

Observed at: 2022-06-08T22:06:09



Observation 120879217: (c) Jan Newton, some rights reserved (CC BY-NC). License: cc-by-nc. Source: <https://www.inaturalist.org/observations/120879217>

20. *Paragymnopus foliophilus* (photo 4/8)

Observation: <https://www.inaturalist.org/observations/120879217>

Observation taxon: *Paragymnopus foliophilus*

Community taxon: *Paragymnopus foliophilus*

Barcode Inferred Species or Name: No set

Observed at: 2022-06-08T22:06:09



20. *Paragymnopus foliophilus* (photo 5/8)

Observation: <https://www.inaturalist.org/observations/120879217>

Observation taxon: *Paragymnopus foliophilus*

Community taxon: *Paragymnopus foliophilus*

Barcode Inferred Species or Name: No set

Observed at: 2022-06-08T22:06:09



20. *Paragymnopus foliophilus* (photo 6/8)

Observation: <https://www.inaturalist.org/observations/120879217>

Observation taxon: *Paragymnopus foliophilus*

Community taxon: *Paragymnopus foliophilus*

Barcode Inferred Species or Name: No set

Observed at: 2022-06-08T22:06:09



Observation 120879217: (c) Jan Newton, some rights reserved (CC BY-NC). License: cc-by-nc. Source: <https://www.inaturalist.org/observations/120879217>

20. *Paragymnopus foliophilus* (photo 7/8)

Observation: <https://www.inaturalist.org/observations/120879217>

Observation taxon: *Paragymnopus foliophilus*

Community taxon: *Paragymnopus foliophilus*

Barcode Inferred Species or Name: No set

Observed at: 2022-06-08T22:06:09



Observation 120879217: (c) Jan Newton, some rights reserved (CC BY-NC). License: cc-by-nc. Source: <https://www.inaturalist.org/observations/120879217>

20. *Paragymnopus foliophilus* (photo 8/8)

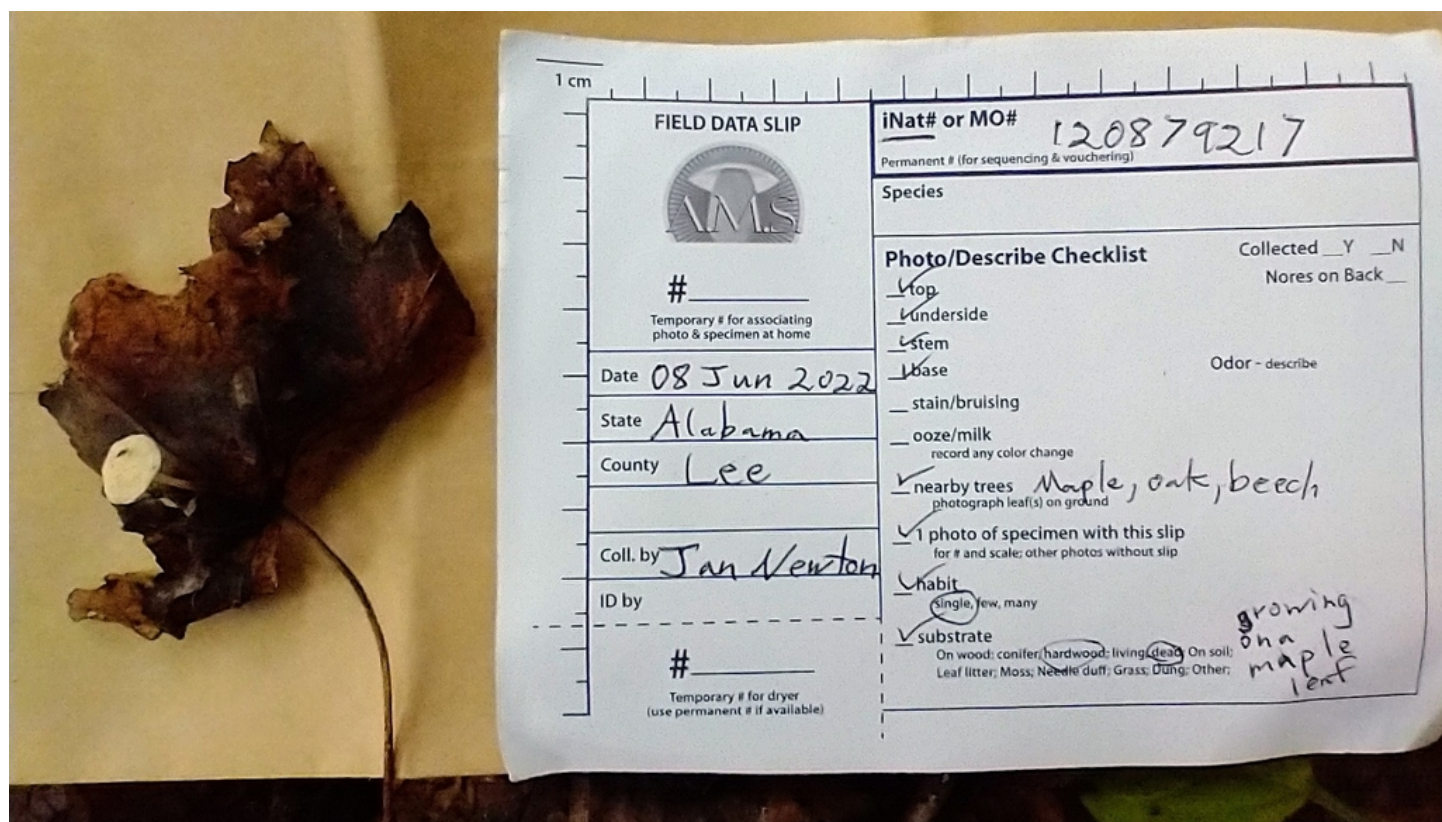
Observation: <https://www.inaturalist.org/observations/120879217>

Observation taxon: *Paragymnopus foliophilus*

Community taxon: *Paragymnopus foliophilus*


Barcode Inferred Species or Name: No set

Observed at: 2022-06-08T22:06:09



1 cm

FIELD DATA SLIP



Temporary # for associating photo & specimen at home

Date 08 Jun 2022

State Alabama

County Lee

Coll. by Jan Newton

ID by _____

Temporary # for dryer (use permanent # if available)

iNat# or MO# 120879217
Permanent # (for sequencing & vouchering)

Species

Photo/Describe Checklist

☒ Top
☒ Underside
☒ Stem
☒ Base

Collected ☐ Y ☐ N
Notes on Back _____

Odor - describe

☐ stain/bruising
☐ ooze/milk
record any color change

☒ nearby trees Maple, oak, beech
photograph leaf(s) on ground

☒ 1 photo of specimen with this slip
for # and scale; other photos without slip

☒ habit
single, few, many

☒ substrate
On wood: conifer; hardwood: living; dead On soil:
Leaf litter; Moss; Needle duff; Grass; Dung; Other;

growing on a maple leaf

21. *Paragymnopus foliophilus* (photo 1/8)

Observation: <https://www.inaturalist.org/observations/120884296>

Observation taxon: *Paragymnopus foliophilus*

Community taxon: *Paragymnopus foliophilus*

Barcode Inferred Species or Name: *Paragymnopus foliophilus*

Observed at: 2022-06-08T22:48:34



Observation 120884296: (c) Jan Newton, some rights reserved (CC BY-NC). License: cc-by-nc. Source: <https://www.inaturalist.org/observations/120884296>

21. *Paragymnopus foliophilus* (photo 2/8)

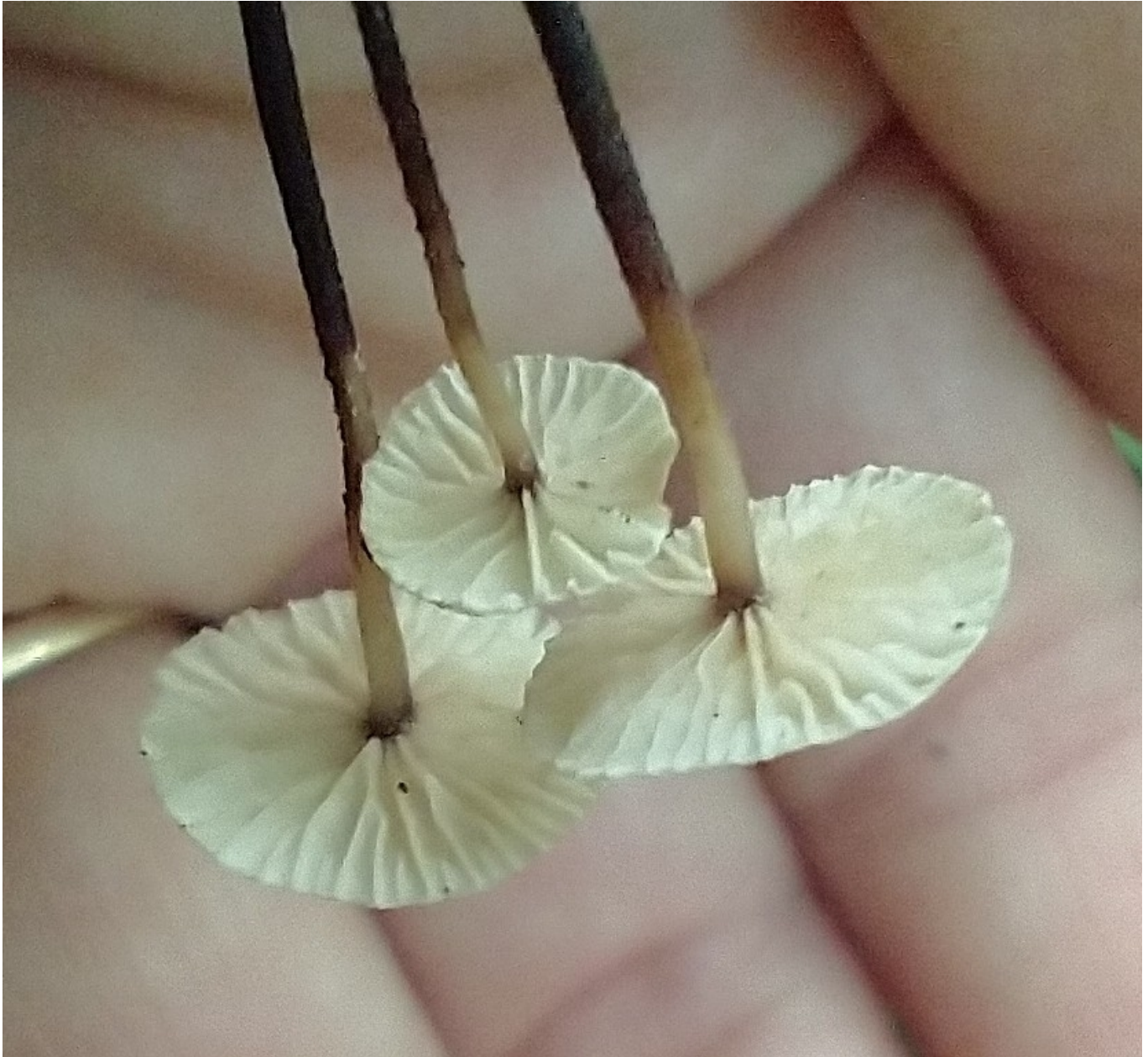
Observation: <https://www.inaturalist.org/observations/120884296>

Observation taxon: *Paragymnopus foliophilus*

Community taxon: *Paragymnopus foliophilus*

Barcode Inferred Species or Name: *Paragymnopus foliophilus*

Observed at: 2022-06-08T22:48:34



21. *Paragymnopus foliophilus* (photo 3/8)

Observation: <https://www.inaturalist.org/observations/120884296>

Observation taxon: *Paragymnopus foliophilus*

Community taxon: *Paragymnopus foliophilus*

Barcode Inferred Species or Name: *Paragymnopus foliophilus*

Observed at: 2022-06-08T22:48:34



21. *Paragymnopus foliophilus* (photo 4/8)

Observation: <https://www.inaturalist.org/observations/120884296>

Observation taxon: *Paragymnopus foliophilus*

Community taxon: *Paragymnopus foliophilus*

Barcode Inferred Species or Name: *Paragymnopus foliophilus*

Observed at: 2022-06-08T22:48:34



21. *Paragymnopus foliophilus* (photo 5/8)

Observation: <https://www.inaturalist.org/observations/120884296>

Observation taxon: *Paragymnopus foliophilus*

Community taxon: *Paragymnopus foliophilus*

Barcode Inferred Species or Name: *Paragymnopus foliophilus*

Observed at: 2022-06-08T22:48:34



21. *Paragymnopus foliophilus* (photo 6/8)

Observation: <https://www.inaturalist.org/observations/120884296>

Observation taxon: *Paragymnopus foliophilus*

Community taxon: *Paragymnopus foliophilus*

Barcode Inferred Species or Name: *Paragymnopus foliophilus*

Observed at: 2022-06-08T22:48:34



Observation 120884296: (c) Jan Newton, some rights reserved (CC BY-NC). License: cc-by-nc. Source: <https://www.inaturalist.org/observations/120884296>

21. *Paragymnopus foliiphilus* (photo 7/8)

Observation: <https://www.inaturalist.org/observations/120884296>

Observation taxon: *Paragymnopus foliiphilus*

Community taxon: *Paragymnopus foliiphilus*

Barcode Inferred Species or Name: *Paragymnopus foliiphilus*

Observed at: 2022-06-08T22:48:34



Observation 120884296: (c) Jan Newton, some rights reserved (CC BY-NC). License: cc-by-nc. Source: <https://www.inaturalist.org/observations/120884296>

21. *Paragymnopus foliophilus* (photo 8/8)

Observation: <https://www.inaturalist.org/observations/120884296>

Observation taxon: *Paragymnopus foliophilus*

Community taxon: *Paragymnopus foliophilus*

Barcode Inferred Species or Name: *Paragymnopus foliophilus*

Observed at: 2022-06-08T22:48:34



Observation 120884296: (c) Jan Newton, some rights reserved (CC BY-NC). License: cc-by-nc. Source: <https://www.inaturalist.org/observations/120884296>

22. *Phlebiopsis crassa* (photo 1/8)

Observation: <https://www.inaturalist.org/observations/106296020>

Observation taxon: *Phlebiopsis crassa*

Community taxon: *Phlebiopsis crassa*

Barcode Inferred Species or Name: No set

Observed at: 2022-02-05T22:42:15



Observation 106296020: (c) Jan Newton, some rights reserved (CC BY-NC). License: cc-by-nc. Source: <https://www.inaturalist.org/observations/106296020>

22. *Phlebiopsis crassa* (photo 2/8)

Observation: <https://www.inaturalist.org/observations/106296020>

Observation taxon: *Phlebiopsis crassa*

Community taxon: *Phlebiopsis crassa*

Barcode Inferred Species or Name: No set

Observed at: 2022-02-05T22:42:15



Observation 106296020: (c) Jan Newton, some rights reserved (CC BY-NC). License: cc-by-nc. Source: <https://www.inaturalist.org/observations/106296020>

22. *Phlebiopsis crassa* (photo 3/8)

Observation: <https://www.inaturalist.org/observations/106296020>

Observation taxon: *Phlebiopsis crassa*

Community taxon: *Phlebiopsis crassa*

Barcode Inferred Species or Name: No set

Observed at: 2022-02-05T22:42:15



Observation 106296020: (c) Jan Newton, some rights reserved (CC BY-NC). License: cc-by-nc. Source: <https://www.inaturalist.org/observations/106296020>

22. *Phlebiopsis crassa* (photo 4/8)

Observation: <https://www.inaturalist.org/observations/106296020>

Observation taxon: *Phlebiopsis crassa*

Community taxon: *Phlebiopsis crassa*

Barcode Inferred Species or Name: No set

Observed at: 2022-02-05T22:42:15



Observation 106296020: (c) Jan Newton, some rights reserved (CC BY-NC). License: cc-by-nc. Source: <https://www.inaturalist.org/observations/106296020>

22. *Phlebiopsis crassa* (photo 5/8)

Observation: <https://www.inaturalist.org/observations/106296020>

Observation taxon: *Phlebiopsis crassa*

Community taxon: *Phlebiopsis crassa*

Barcode Inferred Species or Name: No set

Observed at: 2022-02-05T22:42:15



Observation 106296020: (c) Jan Newton, some rights reserved (CC BY-NC). License: cc-by-nc. Source: <https://www.inaturalist.org/observations/106296020>

22. *Phlebiopsis crassa* (photo 6/8)

Observation: <https://www.inaturalist.org/observations/106296020>

Observation taxon: *Phlebiopsis crassa*

Community taxon: *Phlebiopsis crassa*

Barcode Inferred Species or Name: No set

Observed at: 2022-02-05T22:42:15



Observation 106296020: (c) Jan Newton, some rights reserved (CC BY-NC). License: cc-by-nc. Source: <https://www.inaturalist.org/observations/106296020>

22. *Phlebiopsis crassa* (photo 7/8)

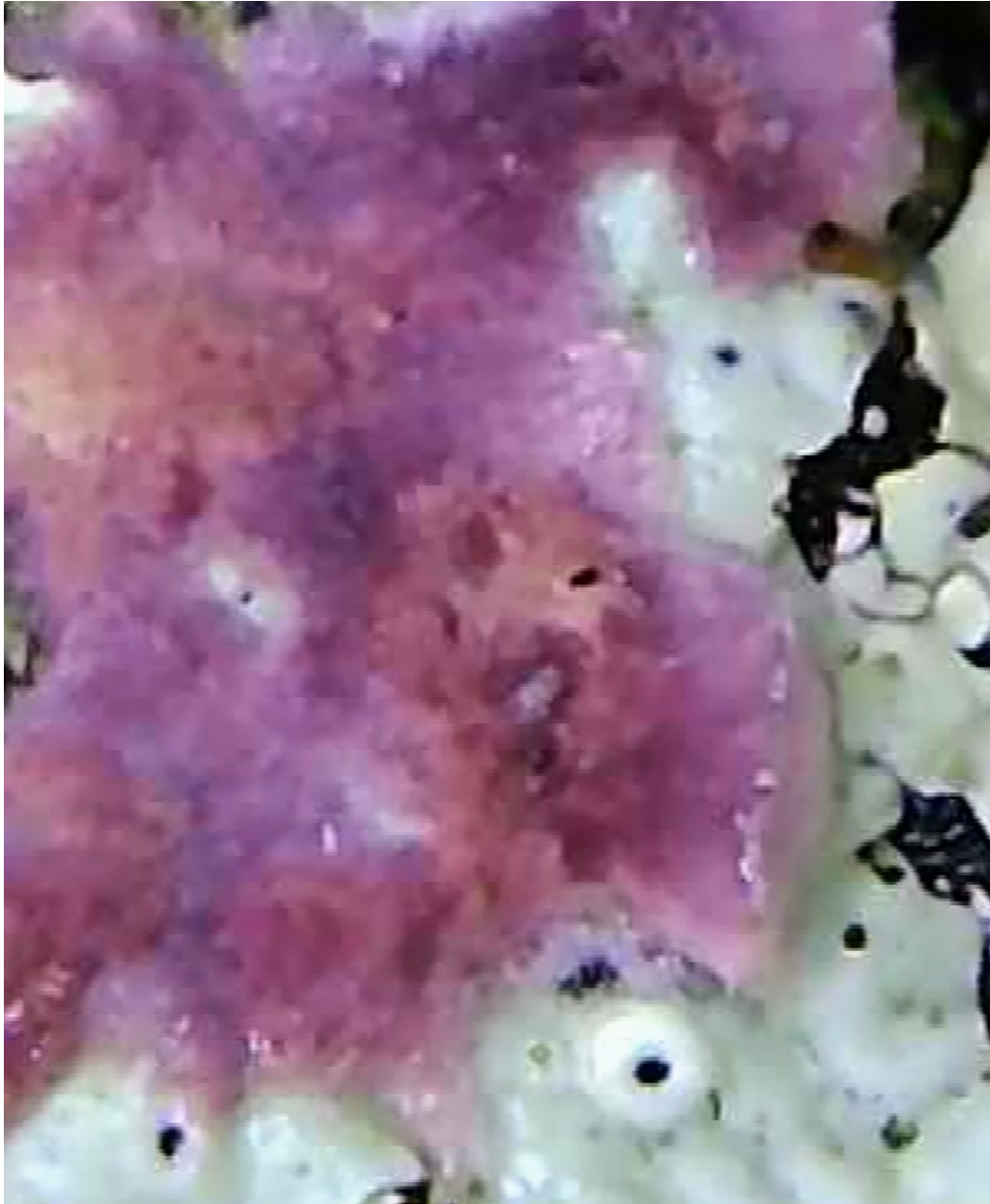
Observation: <https://www.inaturalist.org/observations/106296020>

Observation taxon: *Phlebiopsis crassa*

Community taxon: *Phlebiopsis crassa*

Barcode Inferred Species or Name: No set

Observed at: 2022-02-05T22:42:15



Observation 106296020: (c) Jan Newton, some rights reserved (CC BY-NC). License: cc-by-nc. Source: <https://www.inaturalist.org/observations/106296020>

22. *Phlebiopsis crassa* (photo 8/8)

Observation: <https://www.inaturalist.org/observations/106296020>

Observation taxon: *Phlebiopsis crassa*

Community taxon: *Phlebiopsis crassa*

Barcode Inferred Species or Name: No set

Observed at: 2022-02-05T22:42:15



Observation 106296020: (c) Jan Newton, some rights reserved (CC BY-NC). License: cc-by-nc. Source: <https://www.inaturalist.org/observations/106296020>

23. *Phylloporus rhodoxanthus* (photo 1/8)

Observation: <https://www.inaturalist.org/observations/122355292>

Observation taxon: *Phylloporus rhodoxanthus*

Community taxon: *Phylloporus rhodoxanthus*

Barcode Inferred Species or Name: No set

Observed at: 2022-06-18T18:49:55



Observation 122355292: (c) Jan Newton, some rights reserved (CC BY-NC). License: cc-by-nc. Source: <https://www.inaturalist.org/observations/122355292>

23. *Phylloporus rhodoxanthus* (photo 2/8)

Observation: <https://www.inaturalist.org/observations/122355292>

Observation taxon: *Phylloporus rhodoxanthus*

Community taxon: *Phylloporus rhodoxanthus*

Barcode Inferred Species or Name: No set

Observed at: 2022-06-18T18:49:55



23. *Phylloporus rhodoxanthus* (photo 3/8)

Observation: <https://www.inaturalist.org/observations/122355292>

Observation taxon: *Phylloporus rhodoxanthus*

Community taxon: *Phylloporus rhodoxanthus*

Barcode Inferred Species or Name: No set

Observed at: 2022-06-18T18:49:55



Observation 122355292: (c) Jan Newton, some rights reserved (CC BY-NC). License: cc-by-nc. Source: <https://www.inaturalist.org/observations/122355292>

23. *Phylloporus rhodoxanthus* (photo 4/8)

Observation: <https://www.inaturalist.org/observations/122355292>

Observation taxon: *Phylloporus rhodoxanthus*

Community taxon: *Phylloporus rhodoxanthus*

Barcode Inferred Species or Name: No set

Observed at: 2022-06-18T18:49:55



Observation 122355292: (c) Jan Newton, some rights reserved (CC BY-NC). License: cc-by-nc. Source: <https://www.inaturalist.org/observations/122355292>

23. *Phylloporus rhodoxanthus* (photo 5/8)

Observation: <https://www.inaturalist.org/observations/122355292>

Observation taxon: *Phylloporus rhodoxanthus*

Community taxon: *Phylloporus rhodoxanthus*

Barcode Inferred Species or Name: No set

Observed at: 2022-06-18T18:49:55



23. *Phylloporus rhodoxanthus* (photo 6/8)

Observation: <https://www.inaturalist.org/observations/122355292>

Observation taxon: *Phylloporus rhodoxanthus*

Community taxon: *Phylloporus rhodoxanthus*

Barcode Inferred Species or Name: No set

Observed at: 2022-06-18T18:49:55



Observation 122355292: (c) Jan Newton, some rights reserved (CC BY-NC). License: cc-by-nc. Source: <https://www.inaturalist.org/observations/122355292>

23. *Phylloporus rhodoxanthus* (photo 7/8)

Observation: <https://www.inaturalist.org/observations/122355292>

Observation taxon: *Phylloporus rhodoxanthus*

Community taxon: *Phylloporus rhodoxanthus*

Barcode Inferred Species or Name: No set

Observed at: 2022-06-18T18:49:55



Observation 122355292: (c) Jan Newton, some rights reserved (CC BY-NC). License: cc-by-nc. Source: <https://www.inaturalist.org/observations/122355292>

23. *Phylloporus rhodoxanthus* (photo 8/8)

Observation: <https://www.inaturalist.org/observations/122355292>

Observation taxon: *Phylloporus rhodoxanthus*

Community taxon: *Phylloporus rhodoxanthus*

Barcode Inferred Species or Name: No set

Observed at: 2022-06-18T18:49:55



24. Pleurotineae (photo 1/7)

Observation: <https://www.inaturalist.org/observations/105345881>

Observation taxon: *Resupinatus*

Community taxon: Pleurotineae

Barcode Inferred Species or Name: *Resupinatus* sp. 'trichotis-IN01'

Observed at: 2022-01-21T22:12:31



Observation 105345881: (c) Jan Newton, some rights reserved (CC BY-NC). License: cc-by-nc. Source: <https://www.inaturalist.org/observations/105345881>

24. Pleurotineae (photo 2/7)

Observation: <https://www.inaturalist.org/observations/105345881>

Observation taxon: Resupinatus

Community taxon: Pleurotineae

Barcode Inferred Species or Name: Resupinatus sp. 'trichotis-IN01'

Observed at: 2022-01-21T22:12:31

